

CROSS & C&C CRESCENT

QUARTERLY ISSUE #4 - WINTER 2019/2020

A LAMBDA CHI ALPHA
PUBLICATION:
CHAPTER NEWS EDITION



Table of Contents



8

CHAPTER NEWS

This listing of chapter news is a collection of all news submissions that took place during the Fall 2019 Semester. Use this section to keep up to date on things happening at your favorite chapter or colony!

16

SPREADING THANKS

The story of how the men of Mississippi State's chapter were able to bring Thanksgiving to community members that would not have had the opportunity otherwise.



24

THE SERVICE THAT
LASTED A LIFETIME

Mentoring the generation that follows the last is a practice that has continued since the beginning of time. Dr. Heilman learned from an early age that his life is meant to be lived for others.



| | |
|----|-----------------------------|
| 4 | Letter from the CEO |
| 6 | Day of Giving Recap |
| 15 | OmegaFi |
| 19 | Fall 2019 Expansion Updates |

| | |
|----|---|
| 21 | What Makes Us Men of Value? |
| 23 | An Ode to a High Pi |
| 28 | How Mentorship is Changing the Future of the Fraternity |
| 30 | Grand High Alpha Prospectus |

LETTER FROM THE CEO



I am continuously surprised by the highs and lows associated with leading an international fraternity. 2020 started with an incredible high, as I interacted with 185 of our student leaders at our annual High Alpha Summit. Their combination of talent, dedication to the values of Lambda Chi Alpha, eagerness to learn new skills, and empathy for one another reinforced my unwavering belief that there is ample hope for their bright future.

However, when I got home Sunday afternoon and sat down to catch up on my weekend reading, I came across an article posted by the American Enterprise Institute that immediately slapped me in the face with reality. As I read, I became even more aware of the difficulties our collegiate brothers face as they work to build happy, successful lives. As the chart on page 31 demonstrates, men today are falling farther and farther behind and suffering at unprecedented levels. A couple of statistics that stood out and are relevant to the fraternal experience are that for every 100 females who earn a bachelor's degree from US universities there are only 74 males, for every 100 females who have problems with alcoholism there are 200 males, and astoundingly, for every 100 females ages 20 to 24 who commit suicide there are 463 males. This generation's man self-reports as anxious, lonely, and angry at never before seen levels. Unlike previous generations, Generation Z is presented with mental and emotional concerns at higher and more unhealthy rates. Young men today are at a pivotal crossroads and are not keeping pace with their female counterparts. It is our belief that Lambda Chi Alpha can help put an end to these alarming trends.

As I get to know our Collegiate Brothers, I become more convinced that today's student needs the lessons conveyed by membership in Lambda Chi Alpha more than ever. But to inspire today's man to lead a life of growth, service, and leadership, we must adapt and face the challenges of this generation head on. Both the Grand High Zeta and Office of Administration agree that meeting the needs of the men of GenZ necessitates a review of all our policies, programs, systems, and tools. If we are to be effective, there can be no sacred cows. It is up to us to rebuild the collegiate experience to meet their needs. It is up to us to ensure our collegiate brothers have the tools they need to be safe, to be healthy, and to be well, so they can eventually thrive.

To this end, I am happy to announce partnerships with entities that employ higher education's brightest minds. Lambda Chi Alpha is actively working with Dyad, The JED Foundation, and OneLove to develop tools needed to diagnose healthy and unhealthy behaviors at both the chapter and the individual brother level.

Diagnosis is not enough, we also need prescriptions. The research findings will allow us to create tools that provide men immediate wellness resources and curriculum that creates the skills needed to develop healthy, reinforcing relationships. These skills include active listening, conducting critical conversations, persevering through adversity, and diagnosing unhealthy relationship characteristics. The desired outcome is not only that these skills enable our men to become better Brothers during their collegiate experience, but that they act as the building blocks of habits that ensure they become the employee, community leader, husband, and father they are meant to be throughout their lifetime.

Throughout our history, Lambda Chi Alpha has adapted to meet the needs of the day and consistently led the Greek community. It is now time to add to that history, change is needed and we must do it together.

In ZAX,

A handwritten signature in black ink, appearing to read "Troy Medley".

Troy Medley



AXA

MTC MERIDIAN
TITLE CORPORATION

CROSS & CRESCENT
STAFF LIST

Managing Editor:
Matt Hornyak

Editor:
Jaren Wilt

Assistant Editor & Writer:
Lindsey Hrinowich

Layout & Design:
Jaren Wilt



By the Numbers

A sincere thank you to our alumni, parents, students, and friends from around the world who came together on #LCADayofGiving to help support personal and professional development opportunities, health and wellness education, and leadership programming for our members.

\$198,600 TOTAL RAISED
THANK YOU FOR MAKING
A DIFFERENCE!



665 TOTAL DONORS



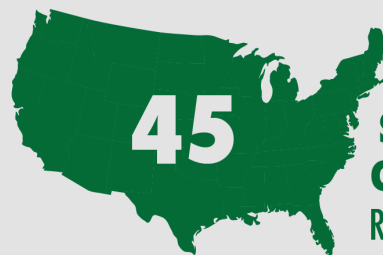
24
HOURS OF
GIVING



OUR LARGEST
DAY OF GIVING TO DATE!

SURPASSING OUR 2017 TOTALS BY \$61,711

249 **\$299**
GIFTS OVER \$100 AVERAGE GIFT



45 STATES AND
CANADA HAD
REPRESENTATION

UNDERGRADUATE GIVING

ENTIRE CHAPTER JOINS THE MASON CIRCLE THROUGH DAY OF GIVING

Lambda Chi Alpha at Florida Southern College has seen hard times. They've looked financial distress in the eyes and contemplated the cost of calling it quits. Less than a year ago, members questioned why the high of becoming a member was met with the low of discovering their increasing debt. It was those hardships that defined what the chapter was going to do in the face of adversity.

In one year, Epsilon-Xi Zeta proved its dedication to the organization and pulled themselves out of massive debt to discover a surplus of \$4,000. The High Zeta sat in a room with shocked smiles glued to their faces, unable to comprehend the magnitude of what they've accomplished. What were they to do with the extra funds? An over-the-top formal would boost morale for the upcoming year and some light renovations to the chapter house would make it more comfortable. After deliberation, the money was meant to go back to where it all started, Lambda Chi Alpha.

"It was our High Pi who brought the idea that we should donate a portion. We could have donated \$300 dollars but, with how much money we had, it seemed like pocket change. After I talked to Lenny Bendo about the Mason Circle pin he had, that's when we decided to donate the \$19.09 [per member]" explains Josue Blanco (Epsilon-Xi, '18).

The Educational Foundation offers pins to undergraduate members who donate toward the Mason Circle. Its namesake highlights our spiritual advisor, Jack Mason, and the bill of \$19.09 represents the year our Fraternity was founded. The fund supports all undergraduate members by financing scholarships, Stead Leadership Seminar and High Alpha Summit.

Blanco knew that this decision was going to come with mixed emotions, but members of the chapter were thrilled to be a part of this exclusive group. The ones who joined during their, "recession" lived through the journey of becoming a high performing chapter. Senior Jack Moore (Epsilon-Xi, '16) explains, "The drive to be pure, high and ever growing still exists even when you are struggling. We doubled the chapter and we got out of debt. Being that change has me excited."

Although members like Justin Moriarty (Epsilon-Xi, '18) weren't initiated when the chapter was rebuilding, his pride for their growth flourishes. Moriarty, Moore and Blanco all explain that they felt it was their duty as a member to give back to the ones who gave them so much. If they can do it, other chapters can as well. As one of the first chapters to have every active member (including the High Pi) a part of the Mason Circle, they want to challenge their Brothers across North America to join them.

Moore explains, "I think a proponent is to push other chapters. Every Lambda Chi Alpha chapter around the globe has the strength and potential to be great. When we heard that we were going to be one of the first, the mindset was, 'What other chapters can we get to follow us in that service that Greek Life and Lambda Chi Alpha promote?'



CHAPTER NEWS

To submit Chapter News, please email communications@lambdachi.org. Undergraduate officers can also report updates on their chapter by logging on to LCAOne/Officer Portal and accessing the "Submit Chapter News" form. If you cannot find news from your chapter, then no information was submitted within this time frame.

Alberta | Edmonton, Alberta

On the weekend of September 21st the chapter held a large house cleanup where they managed to throw out/clean up a large bin worth of stuff and gave the house a renewed look.

They had their annual Epsilon-Rho housing corp Alumni dinner on Saturday, September 28th, where they honored brothers Phil Renaud, Patrick Haney, and Bob Hunka for their successes in life and their contributions to the chapter and fraternity. They also raised over \$5000 at the dinner for the chapter to use in recruitment programs.

Auburn | Auburn, Alabama

On Wednesday, November 5th, three Lambda Chi Alpha brothers from the 1950s era made a presentation to the current brothers of Omega Zeta at Auburn University. In honor of the upcoming Veterans Day, Walter Greer Omega 726, Ron Brown Omega 797, and Bill Goodwin, Sr. Omega 749 financed and presented a beautiful plaque memorializing their fraternity brother, Col. Paul Wedlake Bannon Omega 700.

Greer, Brown and Goodwin are hopeful that by memorializing their friend in this fashion that current and future members of the fraternity, as well as others, will be inspired by the dedication and sacrifice of not only Col. Bannon, but all members of the United States Armed Forces.

Bowling Green State | Bowling Green, Ohio

On November 12th, 2019 the Phi Mu Zeta Chapter held their first annual Crescent Girl Competition. They raised \$1,284 for Feeding America and collected 633 cans for a local food pantry. They had attendance of nearly 200 people and had 6 outstanding contestants participate. The winner by a very close margin was Olivia Larabee of Kappa Kappa Gamma. They are looking to consistently increase the size of this new annual event to donate more money and cans every year.



Buffalo | Buffalo, New York

The brothers of the Buffalo chapter enjoyed a great start to the Fall semester and hoped to continue the momentum into the later part of the semester.

After performing numerous community clean-ups, the brothers kicked off their homecoming weekend with a bang by hosting an Alumni tailgate led by High Rho Andrew Mavrogeorgis. Alumni, family, and friends enjoyed food, music, backyard games and laughs all ahead of the football teams matchup against the Ohio Bobcats. The brothers their mark on the community by participating in Buffalo Community Day on October 19th and volunteering at the food bank ahead of Thanksgiving. Go Bulls!

**California - San Diego** | La Jolla, California

They held their Watermelon Bust Philanthropy this semester and collected over 2,300 pounds of food and over a thousand dollars to donate to Feeding San Diego.

Christopher Newport | Newport News, Virginia

On November 16th, Christopher Newport colony and William & Mary colony held initiation in Williamsburg. CNU-24, Lucas Conner, was initiated.

High Iota Noah Haney and Alumnus Kylon Callaway took first and third place in Alpha Delta Pi's red shoe shuffle 5k.

The Colony participated in Gamma Phi Beta's Moon ball volley ball tournament and Delta Gamma's Anchor Splash. The Colony came in first place in Alpha Delta Pi's Change Wars. The brothers helped volunteer at Feeding America's mobile pantry at the Virginia Medical center as well as raised money for the food bank through a Chipotle fundraiser.

**East Carolina** | Greenville, North Carolina

The colony had a great philanthropy event and raised \$1,000 for charity.

Kansas | Lawrence, Kansas

After a long summer of fun all of their brothers were excited to get back to KU for the fall semester. They started their summer recruitment with 9 signed bids were excited to continue growing and finding brothers who meet the 7 core values.



Kansas State | Manhattan, Kansas

The men of Gamma-Xi worked extremely hard during the Fall semester to maintain a positive relationship with the community and the rest of campus. The chapter participated in the first ever Greek wide philanthropy supporting: "K-State proud." K-State Proud is a student-led, nationally recognized fundraising campaign for K-State. Guided by the leadership of Student Foundation, the campaign encourages students to show their K-State pride through philanthropy. All student campaign donations establish Student Opportunity Awards for fellow K-State students.

For this event, all chapters were to open up a "holiday house tour" for the community, students, and other fraternity and sorority members to come and visit all participating facilities.



Marshall | Huntington, West Virginia

The brothers of Marshall Colony organized a pie a Lambda Chi event that raised money for the Ronald McDonald House Charities. The event was well attended by students, staff, and faculty of Marshall University.



Memphis | Memphis, Tennessee

The Zeta-Theta Chapter had the honor and privilege to have two of their active brothers be selected as Finalists for the position Mr. University of Memphis, with their outgoing President receiving the award! Go Tigers Go!

Michigan | Ann Arbor, Michigan

Michigan brothers and friends gathered on September 27, 2019, in Ann Arbor, to celebrate and remember the life of George W. Spasyk.



Missouri Science & Technology | Rolla, Missouri

The brothers had a great time volunteering for the local walk to end Alzheimers in October. The event had a great turnout and they were happy to help out in raising money and awareness for such a great cause. The chapter plans to volunteer again next year.



Nebraska - Omaha | Omaha, Nebraska

The active chapter helped new and returning students move into the dorms during Move In Days in August.

Officer John Gross, Iota-Delta 625, was recognized by the Ralston Police Department for 30 years of service.

New York | Brooklyn, New York

For the month of August, the Delta Committee was hard at work planning rush events and choosing a theme for the Fall 2019 Rush Week which started on September 1st.

**North Carolina - Greensboro** | Greensboro, North Carolina

The Phi-Theta Zeta initiated 10 new Brothers into the Bond. They look forward to the contributions these men will make to the Phi-Theta Zeta!

North Dakota | Grand Forks, North Dakota

Most of the brothers were away from Grand Forks over the summer, but a select few remained and helped revitalize their house. Many renovations were completed for the new school year and the house looks better than it has in recent years.

**Oregon State** | Corvallis, Oregon

In October, Alpha-Lambda welcomed forty-seven new associate members into the fraternity. They hosted a rush week with each day being a different event. A popular one among rushees and brothers was the bowling and billiards event. They hosted their fall term philanthropy; Watermelon Bash! It was a three-day event in which the last day consisted of a talent show. Seven on-campus sororities participated and the chapter raised around \$10,000, along with 3,500 meals for their partner; Community Outreach, Inc.

**Purdue** | West Lafayette, Indiana

The colony was officially established on September 15th when the first Associate Member Ceremony, conducted by brothers of Kappa-Gamma Zeta at Franklin College, was held at Purdue.

An Alumni Advisory Board of seven alumni was recruited including Richard Bellaver '59, and High Pi James Vachon, Penn State '87.

Twenty-three associate members were initiated into the bond by the brothers of Franklin College on November 2nd at the Lambda Chi Alpha headquarters in Carmel, Indiana.



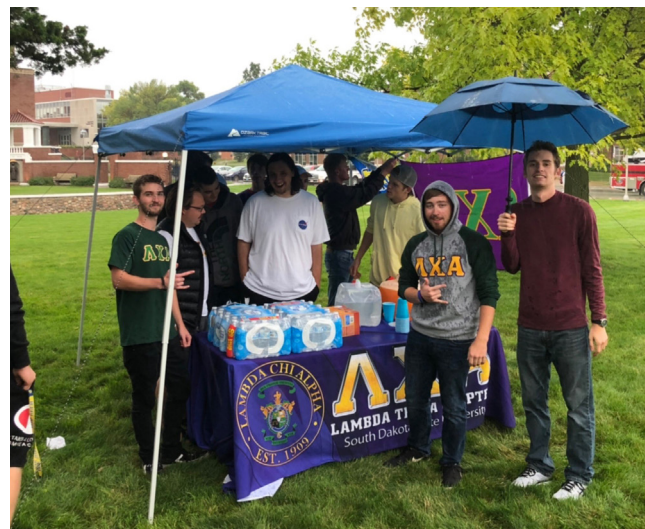
South Dakota Mines | Rapid City, South Dakota

The Pi-Mu Zeta at the South Dakota School of Mines & Technology recently won TWO international awards at the 2019 Lambda Chi Alpha Stead Leadership Seminar! One of which was the Phoenix Award, which is presented to a chapter that has made unusually positive strides in overall chapter operations for at least three consecutive years, taking into consideration improved membership size, depth of programming, and risk-free operations.

The spooky season of October kept the brothers of Pi-Mu Zeta very busy. From their High Steaks poker recruitment event to trick-or-treating for canned goods for feeding SD. First on the 8th was the High Steaks poker recruitment event in which they played board games and the winners got steaks. They also formed a new committee which was a conglomeration of 3 previous committees that didn't have enough members. On the 23rd they had a social with both a fraternity and sorority on campus, they all enjoyed their time swing dancing and singing karaoke. On the 26th some brothers donned their costumes a little early and went out to trick-or-treat for canned goods in the local neighborhoods. They finished the month with their monthly service trip to feeding SD.

South Dakota State | Brookings, South Dakota

The Lambda-Theta chapter was busy this fall with many activities. The chapter welcomed thirteen new Associate Members for the fall semester. The men also sponsored the annual Campanile Climb on September 11, where students could climb the steps of the campus building in honor of those lost on 9/11. Brother Jerrod Fedorchik, Army ROTC cadet helped organize the annual event.





St. Mary's | San Antonio, Texas

Brothers Thad Davis, Garrett Feist, Aaron Gonzales, Alain Peralt, Brandon Villarreal and Austin Igwieke participated in St Mary's University annual service day event called "Continuing the Heritage." This event helped students reach out all over the City of San Antonio to learn about meaningful outreach programs. The brothers partnered with No Graffiti SA, a nonprofit volunteer program dedicated to help removing graffiti across the greater Sana Antonio area. The brothers painted over graffitied bridges, pillars, and water drainage ditches.

Wabash | Crawfordsville, Indiana

The men of Alpha-Kappa Zeta won the campus-wide Homecoming and Chapel Sing Competitions during Homecoming Week. Chapel Sing was the pinnacle of the week's events where the Sphinx Club tests people on their knowledge of the fight song "Old Wabash". Other homecoming competitions included float building, chanting, and banner contests.

Brother Sam Henthorn '20 won the North Coast Athletic Conference Cross Country championship on November 2 in Carmel, IN, with a time of 25:42.7.

They initiated 19 new brothers on November 10.

Dr. Greg Redding '88 stepped down as their High Pi to become the Acting Dean of Students. Brother Rob Shook '83, past president of the National Association of Wabash Men, stepped in and has become a great addition to the leadership of the chapter.

The first week of December (their "dead week" before finals) was very much alive for Wabash College's Alpha-Kappa Zeta. Thursday, they held their semi-annual faculty dinner where they hosted 50 guests from across campus for an evening of fellowship, conversation, and great food by their chef JB Sosbe. Friday was an overnight stay for prospective students at Wabash; they hosted 35 for dinner and discussions, housed 17 overnight, and extended 8 bids. Saturday was their holiday semi-formal, held at the house. Sunday, they held their High Zeta Retreat to discuss chapter goals for the rest of the academic year.

Two brothers will be studying abroad next semester, Devin Guard and Justin Kopp, both in Valencia, Spain. They also welcomed back fall study-abroad brothers Trey Clemons from Namibia, Bryce Looze from China, and Brandon Bowell from Germany.



OMEGAFI

LAMBDA CHI ALPHA ENTERS INTO AN EXCLUSIVE PARTNERSHIP WITH OMEGAFI

The Lambda Chi Alpha Fraternity Board of Directors is excited to announce a new and exclusive partnership with OmegaFi. OmegaFi, the leading technology company serving Fraternity and Sororities, will provide Lambda Chi Alpha chapters a comprehensive suite of solutions focused on financial management, recruitment, communication and member engagement tools.

In addition, OmegaFi will provide Lambda Chi Alpha a new database solution to serve the Office of Administration in Indianapolis that will also add value to membership beyond the member's undergraduate years.

Lambda Chi Alpha Board of Directors is most excited for this partnership as it will offer members the ability to further develop their management skills and provide them with added exposure to modern business management software. The chapter management system will allow chapter officers and members alike to operate at a higher level of efficiency.

OmegaFi CEO, Fred Maglione commented on the partnership saying, "OmegaFi is thrilled to be working with Lambda Chi Alpha in such a large capacity. In addition to providing Compass at the headquarter level and Vault for undergraduate members, we are honored they have trusted us to provide a complete chapter management system for their chapters."

Chief Executive Officer of Lambda Chi Alpha, Troy Medley, also commented on the partnership saying, "We are excited for what the future of this partnership holds. With the help of OmegaFi, our members will have the opportunity to learn how to manage a modern business and develop skills that they will use forever."

Lambda Chi Alpha's goal and purpose behind this partnership is to provide chapters with the resources and support needed to focus on the organization's mission to inspire and equip men to lead an ethical life of growth, service, and leadership, and offer members the ability to gain knowledge and skills they can carry with them throughout life.

LAMBDA CHI ALPHA ZETA MANAGEMENT SYSTEM





SPREADING THANKS

MISSISSIPPI STATE CHAPTER MAKES THANKSGIVING POSSIBLE FOR COMMUNITY MEMBERS



Some colleges and universities are located in big cities and others in the middle of nowhere. More likely than not, these schools are placed in, otherwise, declining towns. The economic dependency these towns hold on the schools incoming students are what keep it alive. The students enjoy their four years and move away, never to think about the state of their college town ever again. For people like Ryan Edwards (Epsilon-Chi, '18), it means more than just a college experience.

Edwards grew up in Starkville, Mississippi and knows the streets better than anyone. From the best pizza place around to the areas of town to avoid after dark, Edwards has been able show his Fraternity Brothers the ropes. He understands the kind of people and poverty that exist just down the street from his cozy apartment on campus. Mississippi is currently one of the most illiterate states in America, meaning that many people are not able to hold living wage jobs that can cover necessary expenses.

"If you go five minutes east, it is not the same type of Starkville that most students are used too. One time a year, we drive around to show them [new members] how blessed we are that we get an education, pay our dues and go to a nice school like this. This is not all of Starkville. Sometimes we get caught up in what we know instead of reaching out to the community" explains Edwards.

It is because of the poverty right outside his window that he encouraged his Brothers to make a larger impact this year. For the past 20 years, the chapter has been delivering cans to families in town who need the extra food to get through the Holidays. This year, members are bringing hot meals straight to the doors of people who, otherwise, would not have had a Thanksgiving meal. The catch? These individuals think they are receiving a bag of canned food. To their surprise, a hot meal and companionship walks up their front door.

Edwards explains, "We are supporting six families. There's a place in Starkville called, What's for Dinner, that does Thanksgiving packages: turkey, casserole, stuffing, green beans and a roll. We're going to bring them cans, goodies and an early Christmas card as well."

As the sole donors for their local Feeding America distribution center at Church of God and Christ, the Mississippi State University chapter are given families with the most need in their community. As members are preparing a hot plate, the Chaplain, Braden Garrison (Epsilon-Chi, '18) will offer to pray over their meal before digging in. Brothers play with the children of the family

while others help bedridden individuals finish a crossword puzzle. When it's time to go, members leave a bag of canned foods as an extra treat to celebrate the Holiday season.

Service projects like this don't just hit close to home for Edwards, they literally hit home. It is not enough to simply get his service hours in for the semester, it is about giving back to the community that built him up to become an honorable man.

"It's truly humbling every time we go. Exploring other people's walk of life is one of the things we can do in helping to be servants to everyone else. Service is in our Core Values and we take that to heart here at Lambda Chi Alpha at Mississippi State University" says Edwards.

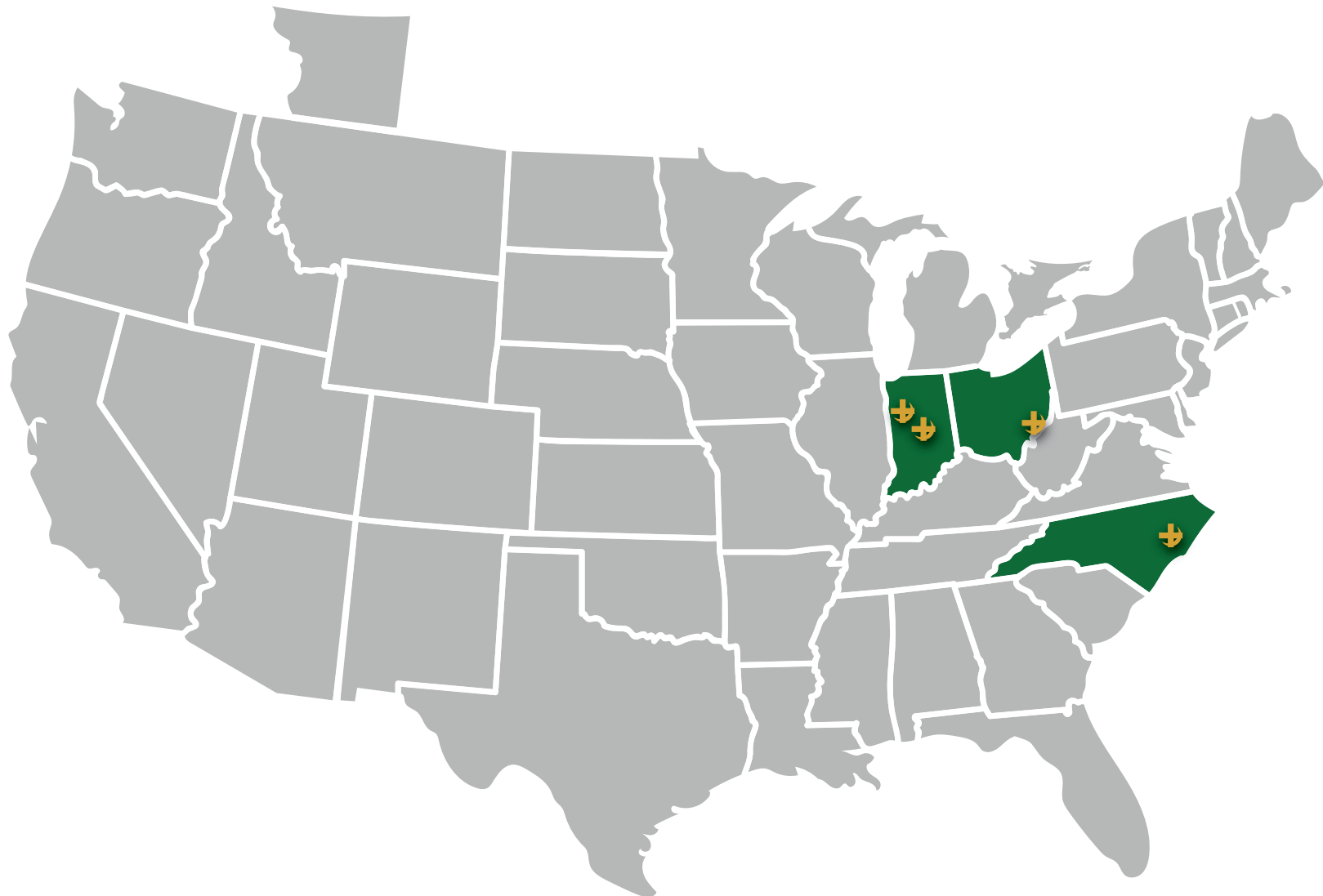


FALL 2019 EXPANSION UPDATES

Butler University



As a school with heavy Greek life involvement, Trevor Nicholas (Pi-Mu, '14) and Tyler Drisko (Alpha-Xi, '14) found no trouble in recruiting men who were open to joining a Fraternity. In only three days, eight men committed to the Brotherhood of Lambda Chi Alpha. The snowball effect continued as that number doubled in the second week on campus. With 21 men currently a part of the colony, they have high hopes for their future in the spring semester.



East Carolina University



Through connections in the area, Corey Miracle (Iota-Gamma, '14) and Jim Phillips (Kappa-Gamma, '15) were able to get immediate guidance on how the campus culture would impact the expansion. Working with a large campus such as ECU, finding men who were interested came as no challenge. After finding ones who were a good fit, 40 men were initiated into Lambda Chi Alpha as Brothers.

Marietta College

The alumni were thrilled to hear of a revitalization at their alma mater and worked in tandem with Trevor Nicholas (Pi-Mu, '14) and Corey Miracle (Iota-Gamma, '14) to gather names. Operations moved quickly as the men arrived on campus and found success in recruiting men involved with campus athletics. Nearly 70% of the associate members are involved in campus activities and show great enthusiasm for cultivating a group that is dedicated to inclusivity. The group is currently at 24 associate members.



Purdue University



With a pool of 40,000 students, the duo of Nicholas and Joseph Suzanne (Pi-Upsilon, '16) were quick to adapt to the large selection of undergraduate men. As an engineering school, the men considering joining are, first and foremost, committed to their schoolwork. By recruiting men with the same mindset, Suzanne and Nicholas are confident in the character and mindset of the 24 initiated Brothers.

WHAT MAKES US MEN OF VALUE?

Part of accepting the call to the brotherhood means understanding where we come from. Lambda Chi Alpha is based upon Christian ideals that are woven in the ritual and netted in the values. They are the foundation to what makes members men of honor and integrity. JB Glass is a figure in the organization who has exemplified this tradition beautifully. Based on his words and actions, he shares his wisdom regarding an important part of our history.

HOW IS THIS PIECE INTEGRATED IN THE LAMBDA CHI ALPHA EXPERIENCE FROM THE MOMENT A MEMBER JOIN TO AN ALUMNUS STATUS?

"If you look at the Cross & Crescent, it is the everlasting symbol that represents Christian values. The crescent is pure, high and ever growing while the cross is our guide through service and sacrifice. Through every moment as an associate member and alumnus, the cross and crescent reminds brothers of where their values rest."

WHAT ARE SOME MISCONCEPTIONS ABOUT THIS PART OF OUR FRATERNITY?

"Many people believe that the Christian ideals of Lambda Chi Alpha requires its member to be men of the same faith. We accept men of all religions and do not discriminate dependent on creed. The Christian ideals are, simply, a guide for the way a man of honor should live. One of service, accountability and integrity is the ideal member, and the values represent that. Living as a role model for others has nothing to do with a religious affiliation, but everything to do with the actions of a honorable man."

***There are organizations that are built on the Jewish faith and allow their members to be a part of their brotherhood. We cannot speak on behalf of the actions and regulations from them and can only speak on behalf of Lambda Chi Alpha Fraternity and its guidelines."*

HOW CAN WE, AS AN ORGANIZATION, MAKE THIS CONCEPT FOR WELL-KNOWN AND APPRECIATED?

"Begin doing research about the history of Lambda Chi Alpha and Greek Life as a whole. Understanding where we come from will provide insight into why certain regulations are in place. Integrating it into our daily conversations about the operations of a chapter can add a whole new outlook into the way it is run. Knowing that each and every move we made represents the General Fraternity, basing actions on wholesome ideals makes for a successfully run chapter."



It is not only alumnus members involved in the preservation of the spiritual aspect of the Fraternity, but undergraduates as well. Jacob McCool (Beta-Delta, '19) felt that it was his Duty to invite his Brothers and Sisters into his faith journey within the walls of Edinboro University.

As the tale is traditionally told, Jacob McCool (Beta-Delta, '19) had no interest in being a part of a Fraternity. He did not want to be involved in the harmful behavior that fraternal organizations hold a reputation for. After walking in the LCA house at Edinboro University, he was hooked on the culture shift upon opening the doors. He was ready to make a difference.

He quickly became dedicated toward encouraging his brothers to be the men of values their oath expects them to be. He went through his first year of memberships knowing that this was going to be a big part of his life, but he didn't know exactly how. During the summer months, it became clear that his calling was bigger than just his chapter.



"I started a Greek Life Bible Study for all of Edinboro University in Fall 2017. One night, I woke up and I knew God was calling me to do more than just my Fraternity and have a Greek-wide bible study. If there is anything, I am most proud of, it is that" says McCool.

It grew to the point that individuals were ready to, "walk across the line of faith" and accept Jesus into their hearts through a baptism. In the Edinboro University pool, McCool and his coleader baptized seven Greek life members, five of them being Lambda Chi Alpha Brothers.

Now that McCool has graduated and continuing mission work in Turkey, he is passing the torch onto his grand little, Caleb Dankle (Beta-Delta);. Along with a chosen female coleader, Dankle; will continue McCool's legacy through pastoring the next generation of Greek students at Edinboro University.

"Seeing what God did over the course of these last two years, it was evident that the Lords hand was at work. It was a place where we could gather together as Christians and learn about the Lord together. It was a place of reliance on the Lord" says McCool.



AN ODE TO A HIGH PI

// Ohana means family and family never gets left behind."

Family is not just those who share a bloodline, but those chosen to be invited into it. A Lifetime of True Brotherhood represents the ones who are chosen to become family. After all, Greek life is grounded in the idea of Brotherhood and Sisterhood. The oath said in unison connects honorable members to the ones who walk the line of dishonesty. It is those members who long for their brothers to challenge that behavior and make them better men.

It is one of the hardest jobs to have, being the one to confront the misconduct of a brother. Some have navigated decades of friendship while others have only one year under their belts. Those who graduated 50 years ago are equally as valid as those who did in May 2019. When individuals choose to continue their journey with Lambda Chi Alpha as a High Pi, their impact reaches new heights. They have the opportunity to challenge their brothers on a mentorship level rather than as peers.

That role comes with countless hours of meetings at the chapter house, some good and some bad. It demands attention to detail as time at the house is limited. Losing sleep because a member needs career advice during a breakdown at midnight is a part of the territory. Meeting with University advisors to talk about the chapter standing takes hours away from their full-time positions. Lastly, it's talking with members parents when it's necessary to protect the mental health of their son. High Pi's aren't just giving up their time, they are sacrificing their personal lives for those who come after them.

Each person who volunteers in that capacity is passionate about continuing the strong legacy that Lambda Chi Alpha has to offer. As one of the largest Fraternities in North America, the men invited into the brotherhood are a direct reflection of what defines a Fraternity. The guidance of a High Pi is a continual reminder of the impact it has on the community at large. They offer a push in the right direction and oversee endless character building as undergraduate members navigate college life.



Lambda Chi Alpha preaches the importance of inviting men of honor and integrity into the brotherhood. They're encouraged to live a life of growth, service and leadership using the tools the organization has designed. It is the High Pi who exemplifies those attributes to display for the undergraduate members. They have the opportunity to learn from someone with life experience and knowledge of the impact Lambda Chi Alpha can have. Through weddings, divorces, promotions and unemployment, the brotherhood continues until it is time to serve once again. Consider this an ode to the High Pi of each and every chapter in North America.

THE SERVICE THAT LASTED A LIFETIME

THE STORY OF DR. BRUCE E. HEILMAN

Mentoring the generation that follows the last is a practice that has continued since the beginning of time. It demonstrates to the mentees to pass forward the wealth and share life lessons they've learned from the older and wiser. The meaning of living a full and generous life is set to example by Dr. Bruce E. Heilman (Gamma-Upsilon, '72). Each opportunity he had was for someone else.

Dr. Heilman learned from an early age that his life is meant to be lived for others. It is not enough to glide through in an attempt to just survive. Serving others and expanding his faith were what drove him out of his original dream of becoming a truck driver. He left a life of stability and safety to join the military during World War II. Heilman watched his friends do the same thing he was willing to do, sacrifice their lives. He watched his most trusted allies exercise that right during the attack at Pearl Harbor, while he now tells stories of his old war buddies. Fortunately for Heilman, he came out on the other end with a newfound abundance of thankfulness and drive for his future.

The GI Bill gave Heilman the opportunity to know his first love: higher education. Less than 20 years after he received his diploma, Heilman was named President of Meredith College in North Carolina. Only five years later, the University of Richmond recruited him to implement a \$50 million gift made by E. Claiborne Robins of the A.H. Robins Pharmaceutical Company. It wasn't by accident that those opportunities came, it was by the sacrifice he made for his country that allowed him to get an education. Now, he is giving that opportunity to thousands of young learners.

It was not just enough to raise the bar academically and fiscally while he was doing the job he always longed for. During his tenure in the Marines, Heilman traveled near and far in order to fulfill his duties. There are places outside of the town he grew up in, and it was on his bucket list to experience them. He coordinated a summer travel adventure for the students at Meredith College soon after he was appointed as the President. Heilman's family and friends were all welcomed, but his students took the precedent. They went to 145 countries during the course of one summer, an experience those students will never forget.

Heilman had a way to people, specifically, getting people to donate toward a noble cause. In the wake of handling a \$50 million gift, he encouraged the Board of Trustees to support the donation by saying, "We should all be able to do collectively what Claiborne Robins did individually." With that, he put the University of Richmond in a strong financial position, just as he did for Meredith College. Beyond his career in higher education, the Marines continued to be the cause his heart wanted to work for. He used his ability of fundraising to put the Marine Military Academy in Harlingen, TX and Marine Corps Museum in Quantico, VA in an even stronger position.







After an honorable career within higher education, Heilman took no time off and he continued living his life with the same veracity he always had. Into retirement, however, that meant writing an autobiography about his first 80 years. Entitled, *An Interruption that Lasted a Lifetime: My First Eighty Years*, chronicles Heilman's life in a way that only he could express. It shares stories of his time in the Marines and documents his passion for higher education and servanthood. It was his way of sharing the wealth of knowledge he'd learned through his years of dedication to his passions.

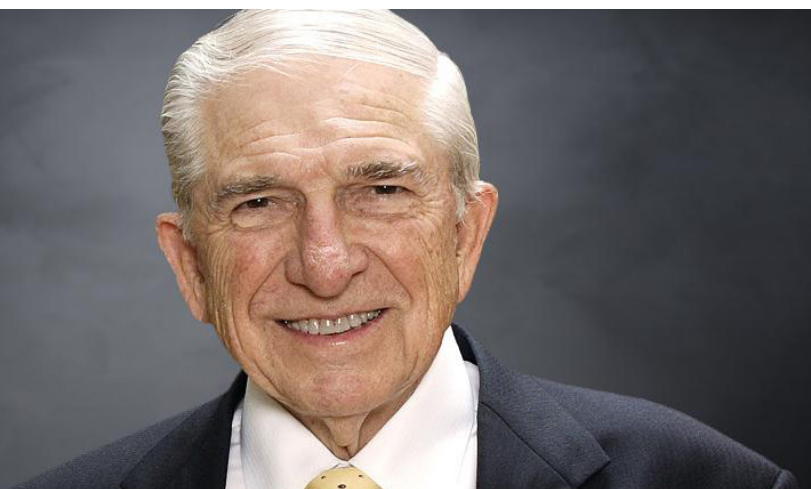
Outside of his academic aspirations, Heilman chose to do something that was purely a source of joy: riding his Harley Davidson. Just a motorcycle wasn't enough, Heilman had to have a premiere motorcycle to traverse across 50 all states. His 800 pound, "two-wheeled, Hog" lasted for 22 years and constant admiration by riding buddies he picked up along the way. At age 88, Heilman took his motorcycle on a solo trip from Alaska to Richmond to experience the thrill of a long ride just one last time.

The way Heilman used his time on earth was a perfect example of what a member of Lambda Chi Alpha exemplifies. He showed character in ways that many never dare to do. He sacrificed a life that was safe and provided a solid future for one that was notorious for taking lives. The Marines didn't have anything to do with his hopes and dreams, but the hopes and dreams of Americans who wanted to see their freedom continue over time.

He displayed what it looked like to be loyal to the things that matter. Heilman's education mattered more to him than anything else. It was the thing that created his career and made his life one that was in service to others. Higher education led him to put priority upon the ones with whom he served to invite them on a summer trip that brought culture to the eyes of future leaders.

Lastly, his gift of fundraising made the entity's he served land in a better financial situation than he found it. Heilman worked tirelessly to ensure that there were no cracks to be filled, the donations he cultivated were taken care of. The rewarding part for him was the joy of knowing that each time someone gave to his college, university or the marines, it was used in a way that would bring the membership together in a more effective way.

The life of Dr. Bruce E. Heilman impacted thousands of people in more ways than one. For some, he was the kind President of their college/university that took them around the world. For others, Heilman was the fun motorcycle enthusiast that was living life to the fullest, even to his last days. No matter the version, he touched everyone's hearts by his selflessness and care for others.





PERSONAL GROWTH

HOW MENTORSHIP IS CHANGING THE FUTURE OF THE FRATERNITY

To be held in high esteem means to live an admirable life through words and actions. One is not born with that kind of commendable character; it is cultivated through years of the influence from a trusted guide. Growing up, those guides can be parents, teachers or counselors who shape an individual into a functional adult. Graduating to high school and moving to college often takes each of those guides out of the picture during a time it is needed the most. The High Pi is meant to step into that role and offer direction for navigating adulthood.

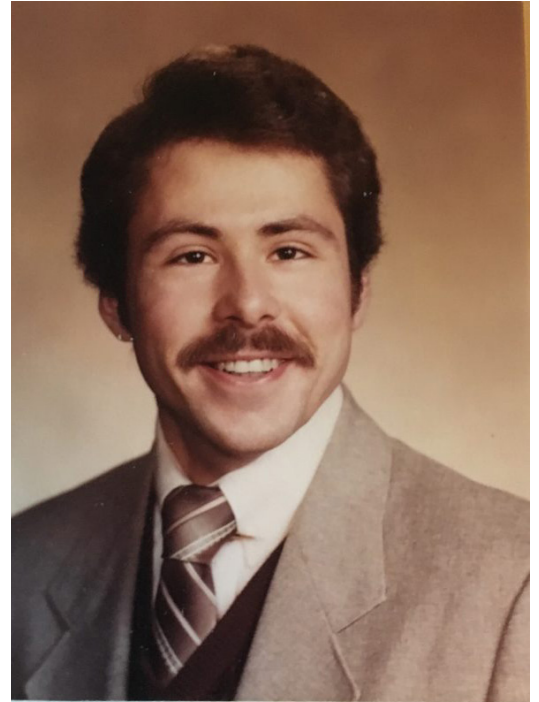
Chapters go through periods of extreme growth and decline. During a massive decline, Randy Ritterman (Epsilon-Zeta, '89) came alongside his brothers to become a guide. He eliminated the negative and ensured that, going forward, Lambda Chi Alpha representatives on the University of North Dakota campus were upstanding individuals. It became one of the largest and highest functioning chapters of the organization within five years and continues to maintain that legacy.

HOW CAN JOINING A FRATERNITY CHANGE SOMEONE'S ENTIRE COLLEGIATE EXPERIENCE?

"I think that fraternities get a bad reputation in a lot of cases. Do they do dumb things? Yes. If you've met a 19 or 20-year-old, they do a lot of dumb things. I think that it is still a good foundation for a lot of guys who are leaving a lot of things behind. With the Fraternity, it allows you to become a big fish in a small pond again. You can join an officer role; you can do leadership and philanthropy. It really gives you that small town community feeling again. You are someone around that group of people and you can be exactly what you want to be."

DESCRIBE THE SHIFT IN EPSILON-ZETA AS YOU WERE TAKING ON THE ROLE OF HIGH PI?

"When I took over as the alumni coordinator in 2013, there were 25 guys. It had a reputation for not having the most upstanding young men. Within five years, we were awarded the High Alpha award and had the second highest GPA on campus. We had 90 guys and completed a 200,000 renovation of the chapter house. There's been a rebirth and it's really about getting in there and doing what is right. Rebuilding the relationship with the University of North Dakota, for example. The assistant dean spoke at our parents formal and the first thing she said was, "I was wrong." Her goal, and she will admit this, was the close Lambda Chi Alpha. She saw no reason for keeping a Fraternity on campus that had no more than 10 or 15 guys with the worst GPA on campus. She now wants her son to join."



WHAT DID YOU DO TO CREATE THAT CULTURE CHANGE?

"The first step you do [when you are an advisor] is get to know the people in the Fraternity house. I got to know the ones were in the house and made a list of the ones who were not going to be there after a very short time. Literally, what I did, was I cleaned house. I did that by holding people accountable to their behavior and holding them accountable for their grades. Your number one priority is school, that is what you are here for. Your number two is Lambda Chi Alpha because your brotherhood will be with you the rest of your life. Your third priority is your relationship with a girlfriend or boyfriend. Your education is the one thing nobody can take away from you. You're brotherhood will be with you your entire life."

WHAT IS THE PURPOSE OF YOUR ROLE AND HOW DOES IT IMPACT THESE MEMBERS?

"I've made it clear to anyone who joins that house: here is my number, call me. There is nothing you're going to say to me that is going to surprise me. After 25 years in corporate America and raising three kids of my own, there is nothing you're going to do that is going to surprise me. I can handle it. What I don't want them to do, is something stupid. I will get texts and calls at 3:00 in the morning. Guys will call and tell me, 'I was messing around with a bunch of guys and I knocked out my front teeth and I can't tell my parents.' I am there as the sounding board when they don't want to go to their parents. I am not replacing their parents and I am not telling them to not go to their parents. I am there to make sure they don't do something stupid thinking that what they've done is going to change their world for the rest of their life."



GHA PROSPECTUS



Dear Brothers,

Earlier this month I had the distinct pleasure of attending the joint High Alpha Summit and Neville Advisors College (HASNAC) in Indianapolis. This gave me further hope for the future of Lambda Chi Alpha. I am especially thankful for our alumni Brothers who took time away from their career and family to facilitate the productive sessions, "paying it forward" so each of our chapters remain vibrant and relevant learning laboratories where each of our Brothers can be and do their best.

The programming was especially relevant as to what skills it will take for Lambda Chi Alpha to succeed at all levels in the decades ahead. It is important that each of us has a personal definition of success and a shared definition of success for our Zeta. What's your definition of success? How can Lambda Chi Alpha help you achieve it? What are you doing to accomplish it? Be deliberate and purposeful. Avoid distractions!

Despite our open motto ("Naught without Labor"), hard work is not enough. As was presented at HASNAC, we must work smart and set SMART goals. We must plan our work and work the plan. Planning is hard work, but it makes all the difference to achieve individual and chapter goals. As Lambda Chi Alpha aspires to become the premier leadership development and service-learning organization in North America, it will be critical that we help our members be prepared for making meaningful contributions in their communities and places of employment upon graduation.

I'm excited about the new tools and programming being rolled out by our Office of Administration. These initiatives will help men identify their personal strengths while having the opportunity to develop them in healthy, genuine and authentic manner. None of this, including HASNAC, would be possible without the generous contributions of time, talent and treasure from our alumni brothers. Thank you for your continued support, Good Brothers! May each of us live up to your hopes and expectations as we strive to lead ethical lives of growth, service and leadership!

Thanks for all you do!

In ZAX

Jeffrey A Stuermer - Grand High Alpha (GHA)



"We Believe in Lambda Chi Alpha"

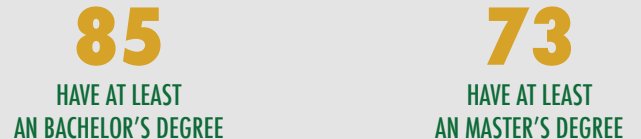
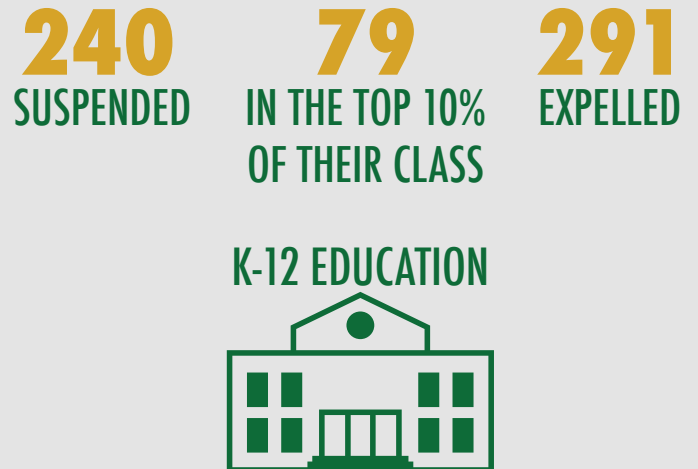
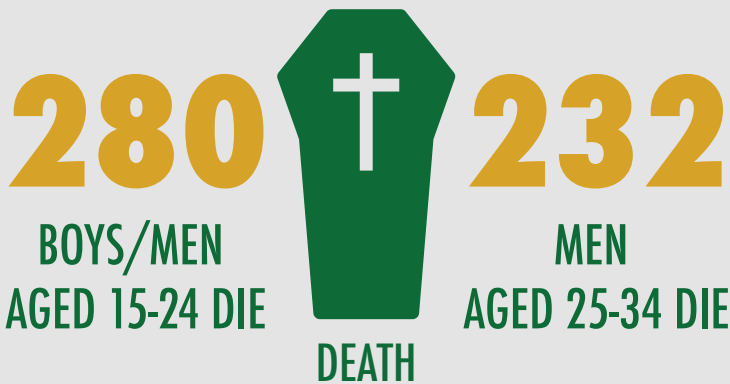


LAMBDA CHI ALPHA
A LIFETIME OF TRUE BROTHERHOOD

Unlike previous generations, Generation Z is presented with mental and emotional concerns at higher and more unhealthy rates. Young men today are at a pivotal crossroads and are not keeping pace with their female counterparts. These statistics are not intended to push a male superiority agenda, but rather detail the truth in our world today. The information below paints a startling future for young men growing up in our society in comparison to every 100 women. It is our belief that Lambda Chi Alpha can help put an end to these alarming trends.

Lambda Chi Alpha is designed for the man seeking more than the stereotypical fraternity experience. He seeks authentic relationships based on respect and self-knowledge, the opportunity to lead and serve, and an international network of men that share the same values which will support him throughout his lifetime.

These are the facts: Every 100 women





LAMBDA CHI ALPHA

A LIFETIME OF TRUE BROTHERHOOD

11711 N. PENNSYLVANIA ST.
STE 250
CARMEL, IN 46032

(317) 872-8000 | lambdachi.org
Headquarters@lambdachi.org

LC&A

A
LAMBDA CHI ALPHA
PUBLICATION